

Switch Play Day

With Jacqueline Prinz, OT

Carrie Hait, OT

Sandra Sveinunggaard, OT &

Toby Scott, AT

November 24, 2016



Objectives for day one

SETT

Overview of various switches

Overview of considerations

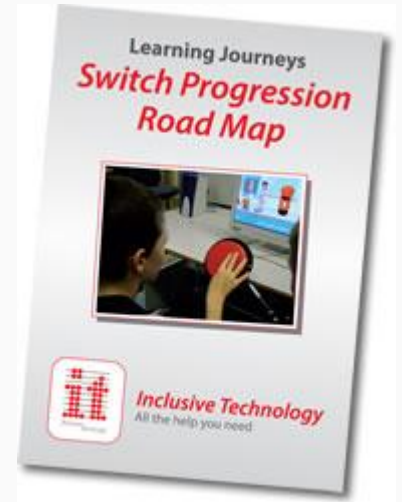
Exploration time



Objectives for day 2

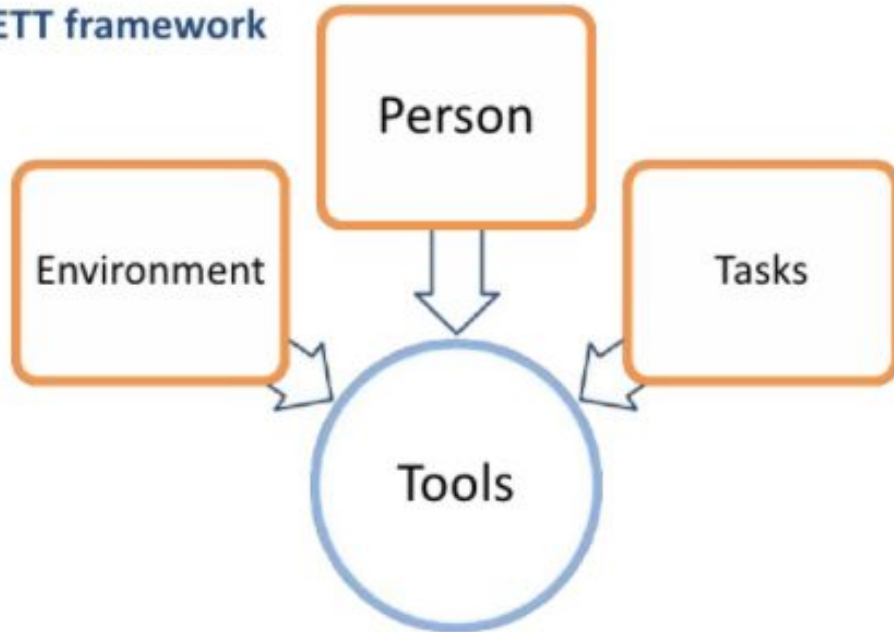
Detailed discussion of considerations

Switch Progression Road Map



SETT

SETT framework



We may not always hold a SETT meeting but we can always “think” SETT.

Different kinds of switches for different learners with different needs...

Single-Switches						
SWITCH TYPE	Mechanical, Wired	Mechanical, Wired	Mechanical, Wired	Mechanical, Wired	Mechanical, Wired	Mechanical, Wired
ACTIVATION TYPE	Pressure	Pressure	Pressure	Pressure	Pressure	Light Touch Pressure
SINGLE/DUAL MULTI	Single	Single	Single	Single	Single	Single
ACTIVATION SURFACE in/cm	5 dia / 12.7 dia	2.5 dia / 6.35 dia	4.5 dia / 11.5 dia	2.5 dia / 6.3 dia	1.375 dia / 3.5 dia	1.75 x 0.5 / 4.5 x 1.3
ACTIVATING FORCE oz/g	5.5 / 156	2.5 / 71	5.3 / 150	3.5 / 100	3.5 / 100	0.4 / 10
TRAVEL BEFORE ACTIVATION in/cm	0.045 / 0.1143	0.025 / 0.0635	0.06 / 0.17	0.05 / 0.12	0.025 / 0.0635	0.25 / 0.7
FEEDBACK	Auditory click, Tactile	Auditory click, Tactile	Auditory click, Tactile	Auditory click, Tactile	Auditory click, Tactile	Auditory click, Tactile
PLUG SIZE in/mm	1/8 / 3.5 mono	1/8 / 3.5 mono	1/8 / 3.5 mono	1/8 / 3.5 mono	1/8 / 3.5 mono	1/8 / 3.5 mono
PART NO	10033500	10033400	56100, 56200, 56500, 56600	57000, 57100, 57200, 57500, 57600	100SPR, 100SPBL, 100SPG, 100SPY, 100-SPBK	58500
MOUNTING PLATE	100LTMP	100STMP	100SCMP	100SCMP	100SCMP	66100
PRICE	\$59	\$59	\$59	\$59	\$59	\$79

Abelnet has created a comprehensive chart that details the features of various switches.

Wired Single-Switches						
		SP4T1P				

Switchfun.weebly.com

This resource was created to house some of the information shared today and information to be shared moving forward. One stop shopping:)

BASICS
TRAINING
SWITCH ACTIVITIES
RESOURCES
VIDEO SUPPORTS



WHAT IS A SWITCH?



A switch is a device that enables an individual experiencing a learning difficulty and/or a physical disability to operate some part of a mains or battery-powered system through a single action.

The most common switch in use in special education is probably the Jelly Bean format originally designed and produced by AbleNet. These now come in a range of four interchangeable colours (the switch top unscrews to allow it to be changed for one of a different colour). The AbleNet switches come in three sizes small (Spec Switch), medium (Jelly Bean) and large (BIGred).

Don't say "Hit the switch!"

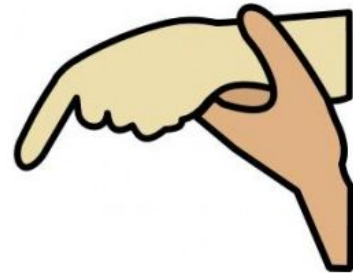
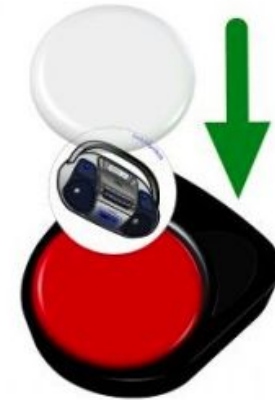
Do say, "Turn the page."

Do say, "Pop the balloon."

Do say, "Make a choice."

Do say, "Turn on/off the music."

Do say, "Splat the paint."



Overview of considerations

Other Considerations

Positioning:

- Always need to begin by looking at the ideal position for the student to be seated in
- The prerequisite to any interaction or activity is a physical position that is comfortable and promotes function

Other Considerations

Physical Functioning:

- Which movements are voluntary? Involuntary?
- Range of motion
- Accuracy
- How quickly can a movement be made
- How much pressure can be applied

Other Considerations

Sensory Issues:

- Visual challenges
- Hearing
- Tactile concerns

Other Considerations

Perceptual Needs:

- Hand eye coordination
- Tracking
- Scanning
- Left or right side spatial relationships

Ideal Switch Site

An ideal switch site uses:

- Small movement
- Isolated movement
- Volitional movement
- Controlled activation
- Sustained pressure
- Controlled release

Switch Site Hierarchy

- Hands
- Head
- Mouth
- Feet
- Lower extremities

**Myth:
“We just
have to have
the perfect
switch
placement”**

Reality:

“We have to find some good possible switch placements and provide opportunities for the child to learn how to use them.”

Linda J Burkhart

Real learners, real stories...

It takes time, patience & loads
of meaningful opportunities

